

FBISE PRACTICAL BASED ASSESMENT (PBA)
BIOLOGY SSC-II
(Curriculum 2006)

Guidelines/instructions for teachers/paper setters:

- i. There will be two Sections in PBA paper. In Section-A there will be one question having parts in it. Similarly, in Section-B there will be one question having parts in it.
- ii. In Section-A, Question No. 1 will be based only on one experiment taken from Part-I of the list of practicals.
- iii. In Section-B, Question No. 2 will be based on multiple experiments taken from Part-II of the list of practicals.
- iv. Weightage of Part-I practicals is 60% while weightage of Part-II practicals is 40% in the PBA paper.
- v. Draw diagram(s) if asked for.
- vi. In the new pattern of practicals i.e. Practical Based Assessment (PBA), there will be no marks for practical note books and viva voce. However, students may record procedures, observations, apparatus and calculation etc on any type of plain papers/work sheets / practical folder for their future memory of all aspects of practical performance in order to attempt the PBA Examination amicably.
- vii. It may be noted that performance of all the prescribed practicals is mandatory in the laboratories during the whole academic year and only those students will be able to attempt the PBA who would have performed the practicals in the laboratories as per requirement of each practical.
- viii. MCQs will not be asked in PBA paper.
- ix. The 0.5 mark question will not be asked in any section of PBA paper.

List of Practicals for Biology SSC-II (Curriculum 2006)

SECTION A (60% of practical marks ---- 6 Marks)	
01	Demonstration through experiment of breathing out air into limewater that carbon dioxide is exhaled during respiration
02	Demonstration of the presence of tar in cigarette smoke and also by charts showing pictures of lungs of smokers and nonsmokers
03	Investigation of the conditions for seed germination
04	Recording the heights of class fellows to predict which kind of variation is it and presentation of the data of class fellows' heights in graphical form (either histogram or bar chart)
05	Investigation about the role of yeast and bacteria in the fermentation of flour and milk

SECTION B (40% of practical marks ---- 4 Marks)	
01	Activity to compare the breathing rate at rest and after exercise
02	Examination of the structure of kidney (sheep kidney / model)
03	Study of bull eye
04	Observation of binary fission of ameba using slides, photomicrographs or charts
05	Observation of budding in yeast from prepared slides
06	Examination of Mustard flower, Gram seed and Maize grain



**FEDERAL BOARD OF INTERMEDIATE AND
SECONDARY EDUCATION
H-8/4, ISLAMABAD**



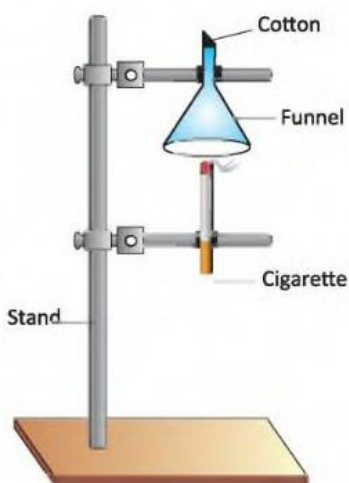
**Model Questions Paper Biology SSC-II
Practical Based Assessment (PBA) (2025)**

Total Marks: 10

Time: 45 minutes

SECTION A

Q1. Carefully observe the following figure showing an experiment:



i. What do you expect to observe when you rub a white tissue paper on the inner surface of funnel? (01)

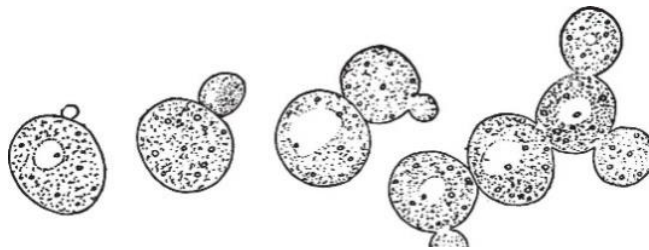
ii. Name at least four harmful substances found in cigarette smoke? (02)

iii. Name any two diseases caused by chemicals present in cigarette smoke? (01)

- iv. How can you differentiate between lungs of smokers and non-smokers from their pictures? Give any two differences. (2)

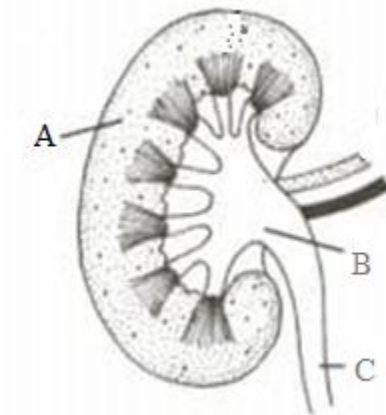
SECTION B

- Q2. (i) Name and define the process shown in the diagram. (01)



- (ii) Which type of cell division is involved in this process? (01)

- (iii) Identify the labelled parts A and B in the given diagram. (01)



- (iv) What is the function of part labelled C in above diagram (given in part ii)? (01)
